



Edition X V2

Owner's Guide

www.hifiman.com

HELLO

Thank you for purchasing the HIFIMAN Edition X V2, an advanced high-performance planar magnetic headphone with an outstanding high efficiency rating. This Owner's Guide is intended to provide a general overview of the many features of your Edition X V2 to provide you with the information you need for many years of enjoyment, safety and reliability. Please take time to familiarize yourself with your new Edition X V2 and all this exceptional headphone has to offer.

Table of Contents

About Edition X V2	03
Outstanding Sound Quality	05
Innovative Capacity to be Driven	07
True-to-Life Sound Imaging	11
Articulately Layered Soundstage	15
Unparalleled Reproduction of Music	18
Lightweight & Ergonomic Design	19
User-Replaceable Connector Design	22
Set-up Instructions	23
HIFIMAN Limited Warranty	26
Customer Service	28

About Edition X V2

The Edition X V2 has undergone several styling and mechanical enhancements that substantially improve its appearance, durability and comfort.

The newly updated Edition X headband has an improved headband that will accommodate a wider range of head sizes while applying correct pressure evenly. A new metal yoke has replaced the original yoke in plastic to increase stability and durability.

The premium earpads also have been specially re-designed to become thicker with an asymmetrical shape that follows the form of the ear cups. The pads are beveled so that they contour to the shape of your head for superb comfort and extended listening. The surface material that makes contact with the head had been changed from Velour to Polyester to increase sound transparency. The surrounding pleather material has not been altered.



Outstanding Sound Quality

Headphone Overview

Compared to traditional dynamic headphones, the planar magnetic technology offers largely superior sounding experience in terms of quality and soundstage. Dynamic headphones utilize conductors that vibrate in select areas of the diaphragm. This results in a large percentage of the diaphragm that cannot be directly driven by those conductors. Planar magnetic headphones are fundamentally different, and operate on a different technical principle. Firstly, the weight of the planar headphones (conductors + diaphragm) is much lower than the dynamic ones. This results in planar headphones' superior performance in treble.

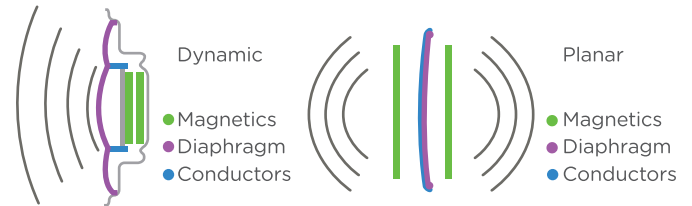
$$f_h = \frac{1}{2\pi} \sqrt{\left(\frac{1}{m_1} + \frac{1}{m_2}\right)} S_n$$

fh: upper frequency bound
 m1: mass of diaphragm
 m2: mass of conductor traces

A smaller mass from either the diaphragm or conductor traces results in a higher upper frequency bound.

Moreover, planar headphones have conductive layers distributed throughout the surface of diaphragm. The diaphragm is evenly driven by the magnetic force so that planar headphones have significantly lower distortion when compared with conventional dynamic headphones.

This lower distortion results in better overall reproduction of minute details. Instrumental positioning and imaging are improved, and the headphone has very natural soundstaging capabilities.



Innovative Capacity to be Driven

Following the flagship model's advanced technology, the Edition X V2 inherits the constant pursuit of uncompromised sound quality by elevating planar magnetic headphone sensitivity. Compared to other planar headphones available on the market, the advantage of higher sensitivity allows a headphone amplifier to release a full-bodied sound and sufficient sound pressure levels without the risk of high distortion. Undoubtedly, this design will save you from the painful process of having to worry whether your headphone amplifier is adequately powerful and allows you to simply enjoy the music.





Edition X V2

True-to-Life Sound Imaging

What truly sets the Edition X V2 apart is the extremely true-to-life sound imaging. When simply driven by a portable media player without the hassle of a bulky dedicated headphone amplifier, the headphone produces a dimensional and full-bodied vocal sound. Exuberant but not over-exaggerated, you can hear minute details in the diction and resonance. Instruments such as strings, piano, and other members of the orchestra are very concretely revealed. You will be amazed to discover the wide range of music genres the Edition X V2 is able to handle.





Edition X V2

Articulated Layered Soundstage

With most other headphones on the market that can be easily driven by portable players, the soundstage appears to be flattened and shallow. What the Edition X V2 provides is a rare sense of space when listening to a complex instrumental performance with an articulated separation of rear/front and left/right. This feature was inherited from the flagship HE1000, seamlessly separating out vocals and different musical instruments or the orchestral accompaniment.





Unparalleled Reproduction of Music

Like our flagship model HE1000, the Edition X V2 excels at midrange and treble reproduction. It is the bass that differs the Edition X V2 from the HE1000, namely the sound of the cello, the contrabass and the bass. However, the HE1000 needs a dedicated headphone amplifier to produce a rich and powerful bass sound. The Edition X V2 can be driven by a portable player to reproduce a bass that sounds relaxed, natural and full-bodied. It easily stands out against all the other headphones on the market.

Lightweight and Ergonomic Design

The innovative suspension headband and specially designed ear pads increase your listening comfort, allowing you to enjoy your music for hours on end. Extensive research by HIFIMAN designers has gone into optimizing the design of these areas in order to maximize your listening enjoyment in both its sound and comfort.





User-Replaceable Connector Design

The cables are user-replaceable and have orientation indicators for left and right channel with a "L" and "R" symbol indicated inside the headband. The package includes one 1.5m cable with a 3.5mm plug and one 3m cable with a $\frac{1}{4}$ " 6.35mm plug. The cables are easy to switch and replace according to your need.

Set-up Instructions

Accessories

- 1.5m headphone cable (3.5mm plug)
- 3m headphone cable (6.35mm plug)
- One pair of earpads (mounted on headphone)
- 1/4" (6.35mm) headphone adapter



Precautions

1. Do not frequently remove the earpads in order to protect the drivers.
2. Do not use any chemical-based cleaners.
3. Do not touch the driver, or risk permanent and irreversible damage.
4. Take care when using the headphone around house pets.
5. When not used for an extended period of time, you may use the storage case, along with a dehumidifier to preserve the quality of the headphone.

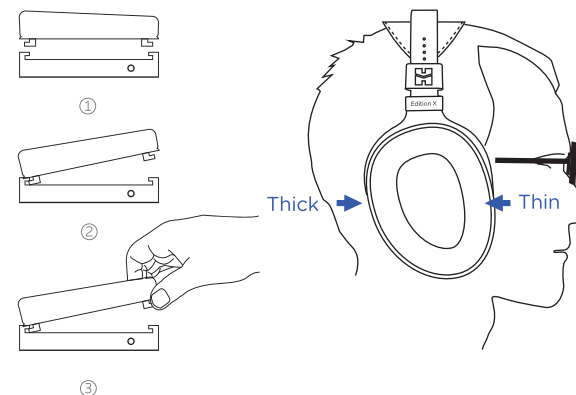
Headband Adjustment

To help fit the headphone to your head, use the two adjustment blocks to change the position of the headband strap to better accommodate your head.



Replacing Earpads

To remove the earpads, locate the clips on the inside of the pad, and use two fingers to gently bend them in and slip them out. To install new pads, simply align the earpad with the mounting ring, and gently bend the clips so they slot in their appropriate locations.



Specifications

- Frequency Response: 8 Hz – 50kHz
- Sensitivity: 103 dB
- Impedance: 25 Ω
- Weight: 14.07oz (399 grams)

Usage Guidelines

1. It is recommended to burn in the Edition X V2 for at least 150 hours.
2. The headphone side of the cable is terminated with 2.5 mm plugs.
3. Avoid using headphone amplifiers with more than 2 full watts of output. You may risk damaging the drivers with misuse.
4. The 6.35mm cable can be used to plug into dedicated headphone amplifiers. Please note that some receivers may mute the speaker outputs when the headphone jack is inserted.
5. To clean the Edition X V2, use a slightly damp cloth. Do not use any chemical based cleaners, and make sure liquid does not flow into the drivers. Special leather cleaners may be used to clean the headband strap and pads. The internal driver should not require any maintenance. If the unit is disassembled, warranty will be forfeit.

HIFIMAN Limited Warranty

Your Edition X V2 is warranted for a period of one year beginning with the original date of purchase. Your dated sales or delivery receipt is your proof of purchase. You may be required to provide proof of purchase as a condition of receiving warranty service so please keep it handy.

If your product is under warranty and some malfunctions appear, please contact HIFIMAN customer service or your authorized dealer. If necessary, and at our discretion, we will provide a warranty repair or replacement of your product.

Caution: do not disassemble or modify the product in any way. Tampering with or modifying your HIFIMAN product will void its warranty.

This Limited Warranty does not apply to :

1. Defective or discolored parts if the damages are caused by fluids, dirt, missing keys, broken plastic parts or improper use.
2. Damage caused by misuse with another product.
3. Use of the product for other than its normal intended use, including, without limitation, failure to use the product in accordance with the supplied "Owner's Guide"
4. Damage caused by accident, abuse, neglect or misuse.
5. If you do not have a valid dated receipt showing proof of purchase.

6. Damage caused by services/repairs or other modifications to the system carried out by anyone other than HIFIMAN or an authorized HIFIMAN distributor or dealer.
7. Damage caused by self-repair or if the unit has been disassembled or modified in any way.

HIFIMAN guarantees your satisfaction and will do everything reasonable to achieve that. If you have any questions or concerns with your product, simply contact your authorized dealer or HIFIMAN directly (if purchased from us) and explain the issue in detail. Should a return be required, a RA# will be issued. Return shipping to HIFIMAN or authorized service facility will be at the owner's expense.

The warranty applies to the first purchaser and is not transferable. Should you need warranty service please contact your authorized HIFIMAN dealer. Or email us directly at customerservice@HIFIMAN.com

If you have any concerns with your product: please contact us to explain the issue in detail. If a return/refund is required, a RA# will be issued. Return shipping to HIFIMAN or authorized service facility is done at the owner's expense.

For any further information or questions, please contact your authorized HIFIMAN dealer. Or email us directly at customerservice@HIFIMAN.com.



facebook.com/hifimanelectronics



twitter.com/hifimanofficial



www.hifiman.com

 **HIFIMAN**
Innovating the Art of Listening